

INDUSTRIAL SEATING

STENO CHAIR

- A heavy-duty industrial chair at an economical price
- Comfortable 2 1/2" foam upholstered seat with a full 360° rotation
- Padded backrest with a floating spring action back hinge
- Standard black vinyl upholstery
- A five-prong base for increased stability
- Height adjustment from 17" to 22"
- Included: Five-swivel black nylon, twin wheel casters

Model No. OA276



MUR-VAN MANUFACTURING



ECONOMY DRAFTING CHAIR

- Pneumatic seat height control adjust from 24" to 31"
- Manual back height and depth adjustment
- Chrome-plated adjustable footring
- Five-star nylon-reinforced base for strength and durability
- Back dimensions: 16" W x 9.5" H
- Seat dimensions: 18 3/4" W x 16 5/8" D

Model No.	Colour	Wt. lbs.
OE096	Black	25
OE097	Dark Grey	25



PNEUMATIC SWIVEL STOOLS

- 5" gas lift
- Height adj. 18" to 23"
- Black select fabric
- Weight: 10 lbs/2 cu. ft.

Model No. OD846



- 10" gas lift
- Height adj. 23" to 33"
- Options ST-03 stool kit (OC822)
- Weight: 12 lbs/2 cu. ft.

Model No. OD847

SCOOTER STOOL

- All-steel construction and soft rubber casters with ball bearing movement allow the Scooter stool to give rugged and versatile service
- Tray shelf for tools or papers
- Capacity: 300 lbs.
- Shipped knocked down
- Ten year warranty



Model No.	Tray Diameter"	Seat Diameter"	Height"	Wt. lbs.
OE848	15	13	14.5	10



1405 & 1410 PREMIUM SERIES CHAIRS

- Task and operator chair
- Moulded foam cushions
- "One-touch" ergonomic chair controls
- Gas lift height adjustment
- Back height and depth adjustment
- Seat and back angle adjustment on 1410 Series
- Optional arms and stool kit available
- Dual wheel carpet casters



Model No.	Description	Seat Dimensions			Back Dimensions		
		W"	D"	H"	W"	D"	H"
OE744	OE745	17 1/2	x 18	x 17-22 1/2	16 1/4	x 14	
OE746	OE747	17 1/2	x 18	x 17-22 1/2	16 1/4	x 14	
OE748	OE749	17 1/2	x 18.5	x 18-23 1/4	17 1/2	x 15	



OE744



OE748
w/option
OC323

TASK CHAIRS & ECONOMICAL STENO CHAIRS

- Pneumatic height adjustments
- Backrest height adjustments
- Five prong poly on steel base
- Dual wheel carpet casters
- Stool kit available
- Optional arms
- Optional glides (recommended with stool kit)



Model No.	Grey	Black	Description	Seat Dimensions W" x D" x H"	Back Dimensions W" x H"	Wt. lbs.
-----------	------	-------	-------------	------------------------------	-------------------------	----------

ECONOMICAL STENO CHAIRS

OC309	OC310	w/o arms	18 x 17 x 17-22	16 1/2 x 11 1/2	30
OC311	OC312	w/fixed arms	18 x 17 x 17-22	16 1/2 x 11 1/2	32
OE092	OE093	w/stool kit	18 x 17 x 22-27	16 1/2 x 11 1/2	35

TASK CHAIRS

OE094	OE095	w/stool kit	18 x 17 x 22-27	16 1/2 x 13 1/2	35
-------	-------	-------------	-----------------	-----------------	----



OC311
w/stool kit
(OA269)



OE095

OPTIONS FOR CHAIRS

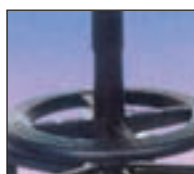
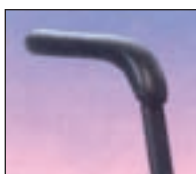
Model No. OA271
Loop Arm Kit
(width adjustable)

Model No. OD848
Fixed Arms

Model No. OC323
T-Arm Kit (width & height adjustable)

Model No. OA269
Stool Kit

Model No. OC822
Chrome Foot Ring



OFFICE SEATING

SUPPORTECH ERGONOMIC CHAIRS

- Multi-tilt control for custom adjustment
- Gas lift height adjustment
- Tension adjustable swivel/tilt w/locking free float
- Height adjustable contoured backrest
- Shown with optional height adjustable armrests
- 5-prong plastic (glass reinforced) base
- Dual wheel carpet casters
- Seat dimensions: 20" W x 18 1/2" D x 19-24" H
- Back dimensions: 19" W x 21" H



Model No.			
Black	Grey	Burgundy	Blue
OC359	OC360	OD839	OD840
OE639	Optional arms		



DRAFTING STOOLS

- Designed with a contoured seat and back
- 3-way back adjustment provides user comfort
- Seat and back are made with a solid 3/4" plywood frame and fastened together with T nuts
- Standard 100% polypropylene black fabric upholstery
- One piece durable plastic base with chrome footrest
- Two pneumatic gas levers simplify height adjustment from 24 1/2" to 30" and ergonomic tilt
- With casters

Model No. OA286



MUR-VAN MANUFACTURING

PREMIUM SERIES MULTI-FUNCTION OPERATOR CHAIRS

- New concept fabric design
- Heavy-duty multi-tilt mechanism with tension adjustable infinite lock tilt
- Forward tilt with lockout option
- Independent back angle adjustment
- Ratchet backrest height adjustment
- Heavy-duty steel base with plastic cover
- Injection moulded foam cushions
- Dual wheel carpet casters
- Pneumatic gas lift height adjustment: 18"- 23"
- Seat dimensions: 18" W x 18" D x 18-23" H
- Back dimensions: 17" W x 21" H



Model No.				Description
Grey	Black	Burgundy	Blue	
OF194	OF195	OF193	OF192	Operator chair
OF190	OF191	OF189	OF188	Operator chair w/T-arms
OF182	OF183	OF181	OF180	Operator chair w/loop-arms

w/adjustable
T-arms



Standard

w/loop
arms



POLYPROPYLENE STACKING CHAIRS

- Made of one-piece moulded polypropylene shell and sturdy chrome frame
- Available in 6 standard colours



Model No.					
Black	Blue	Beige	Brown	Green	Grey
OA275	OA279	OA285	OA268	OD215	OA272

BIRCH PLYWOOD STACKING CHAIRS

- Assembled to a beige enamel steel frame
- Seat and back are 1/4" thick overall

Model No. OA282



PLASTIC SEAT SWIVEL STOOL

- Made of 1" diameter 16-gauge tubular steel base
- Sturdy plastic seat
- Seat is manually adjustable from 22" to 28" high; just raise or lower the steel rod and lock securely in place
- 360° swivel
- Colour: black seat with grey epoxy base

Model No. OA241



MUR-VAN MANUFACTURING



UPHOLSTERED STACKING CHAIRS

- Easy to stack for compact storage
- Vinyl covering over a chrome frame protects against water and mildew
- Armchair includes black plastic rests
- Beige and red colour also available



Model No.			
Black	Blue	Brown	Description
OA278	OA886	OA832	No arms
OA274	OA852	OA856	W/arms

PLASTIC CHAIRS

- Incredibly strong and durable thermoplastic shell which assures correct posture and provides maximum comfort for sustained periods of sitting
- Arched back with sculptured cut-out provides excellent ventilation
- Heavy-duty welded, unitized chassis designed to enable stacking yet avoids protruding legs
- Legs made of 16-gauge tubular steel
- Heavy 14-gauge channel cross braces provide anchor points for the shell
- Frame is black



Model No.					Seat Height"
Blue	Grey	Black	Green		
OD925	OD929	OD933	OD937		18

